

马尔文之居 2

MALVERN RESIDENCE #2

项目地点：澳大利亚，墨尔本马尔文
设计公司：MASSIMO Interiors
设计师：Massimo Speroni
摄影：Stu Morley

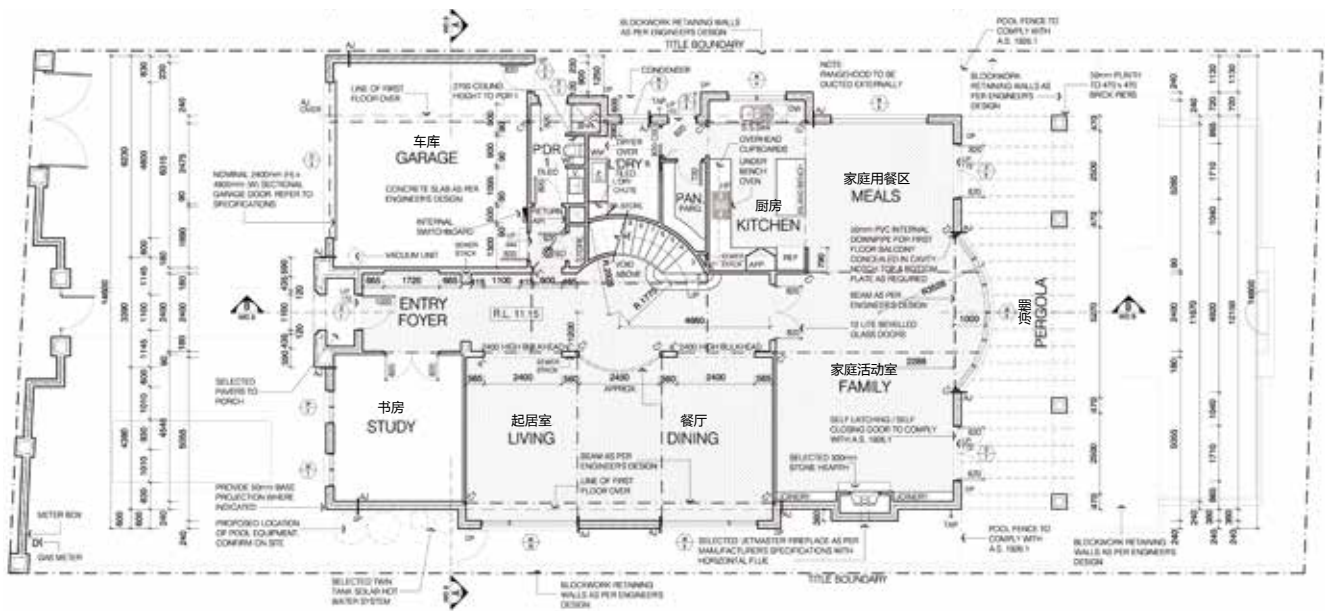
- Location: Melbourne, Australia
- Design Studio: MASSIMO Interiors
- Designer: Massimo Speroni
- Photographer: Stu Morley



本案是一个庞大且临近街道的旧建筑，业主买下这个两层、四卧室、四浴室的物业，希望在设计上拥有自己独特的风格。业主喜欢法式风格，且希望色彩丰富、有魅力，要有让人激赏的元素，让老房子重获新生。

When the clients purchased this two-storey, four-bedroom and four-bathroom property, they wanted to inject their personal stamp on it. Although the property had a grand and imposing street presence, the interiors of this French inspired home were left bland with a monochromatic colour scheme. The clients' brief was to inject colour, glamour and a wow factor making their new home come to life.





一层平面图
Ground Floor Plan

设计师要设计一个能反映业主气质的空间: 大胆而且色彩丰富, 同时保持优雅和精致的气氛。通常业主收藏的绘画和高档艺术品决定了室内的色调, 他们在不同地方的展示为本案打开了创新设计的思路。

I was aiming to create a space that reflected the clients' personality: bold and colourful yet maintaining an elegant and sophisticated atmosphere. The colour palette was determined in most cases by the paintings and beautiful art works already in the clients' possession. Their exhibition to different parts of the house opened up new though for the innovative concept designs.

设计的灵感和方向是“好莱坞的黄金时代”, 因此设计中注入了奔放的颜色和大胆的粗线条。20 世纪 30 年代的好莱坞摄政风格、精致华丽的新古典元素和现代主义设计在本案的设计中贯穿应用, 让本案拥有一种独特的格调。最终本案的设计达成了业主的愿望。

The inspiration and direction for the design was the “old Hollywood Glamour” injected with bursts of colour and audaciously bold; it was clear to me that this style would suit the client's brief. The popular 1930s Hollywood Regency style, combined with elaborate, ornate Neoclassicism elements and modernism was utilised throughout the house with a contemporary spin.



这是一所让人过目难忘的建筑，他的魅力在于优雅的外观、对称的设计和良好的比例。进入室内，首先看到的是一个大型的楼梯间，三米高的天花板上有独具特色的檐口和石膏线条，方形柱、细木工踢脚线让这个空间看起来气质非凡。楼梯间正对客厅和餐厅，客厅和餐厅是一个开放式的大空间，厨房和家庭用餐区面积也比较大，可举行较大规模的娱乐聚餐活动。家庭活动室以经典的法式门和落地窗作为架构，给室内提供了充足的光线，室外游泳池紧挨着家庭活动室，可以通过门窗直接看见游泳池的景色。从弯曲的楼梯可以进入本案的二层，二层有4个卧室，卧室2和卧室3对称分布于楼梯两侧，浴室位于两个卧室中间，由两个卧室共用。卧室1为主卧室，主卧有一个阳台，可以俯瞰下面的游泳池和休闲区，同时带有独立的浴室和豪华的衣帽间。

The appeal of this house begins at its elegant facade. Symmetrical in design and well proportioned, the frontage creates an unforgettable first impression as soon as you pull

into the driveway. On the ground floor three-metre high ceilings with feature cornice and plaster work, attached square columns and detailed timberwork on the skirting and architraves impress on first sight. This sets the scene for the centrepiece – a grand curved staircase, opening to the wonderful formal dining and living area. Also on the ground floor is a more casual open-plan living space, complete with a large lounge room, meals area and kitchen fit for large-scale entertaining. The family zone is framed with classic French doors and a full-height bay window, filling the room with light and creating a convenient view of the pool, which sits next to a paved entertaining area. The curved staircase leads to the first level where two generously proportioned bedrooms have direct access to a shared bathroom. The third bedroom has its own en suite. The master bedroom has a balcony that overlooks the pool and entertaining area below, it has an en suite with a free-standing bath and an expansive dressing room.





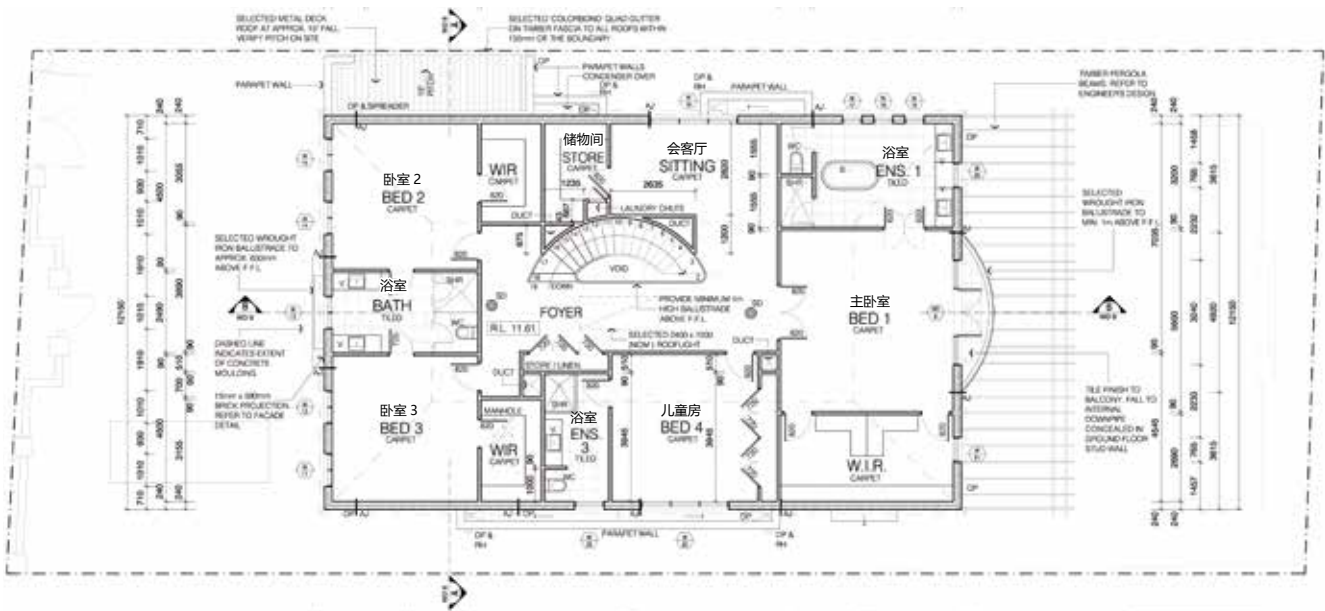




设计师在本案中最得意的设计莫过于书房。这里最初是一个备用的卧室,这个房间的设计最具特色且为居住者增加了新的实用性功能,这一转化是出人意料的。这是一个迷人而又不拘一格的空间,同时又不失典雅,令人激赏。书房采用了大量经典的设计元素,如:展示绘画的拱门、水晶吊灯、聚氨酯的现代椅子、抽象的黄铜立体雕塑,还有定制的黑色油漆飞溅图案的地毯。

My favourite space would have to be the home office. Initially set up as a spare bedroom, this room has had the most impactful redesign and reclaimed a new practical purpose for the inhabitants. The transformation was incredible. It is a glamorous and eclectic room yet elegant and exciting. There are classical elements like the arch, built to showcase the painting, and the chandelier paired with contemporary polyurethane clear chairs, brass abstract wall sculptures and a graphic splatter custom rug.





二层平面图
Second Floor Plan









马尔文之居 1

MALVERN RESIDENCE #1

项目地点：澳大利亚，墨尔本马尔文

项目面积：126 平方米

设计公司：MASSIMO Interiors

设计师：Massimo Speroni

摄影：Stu Morley

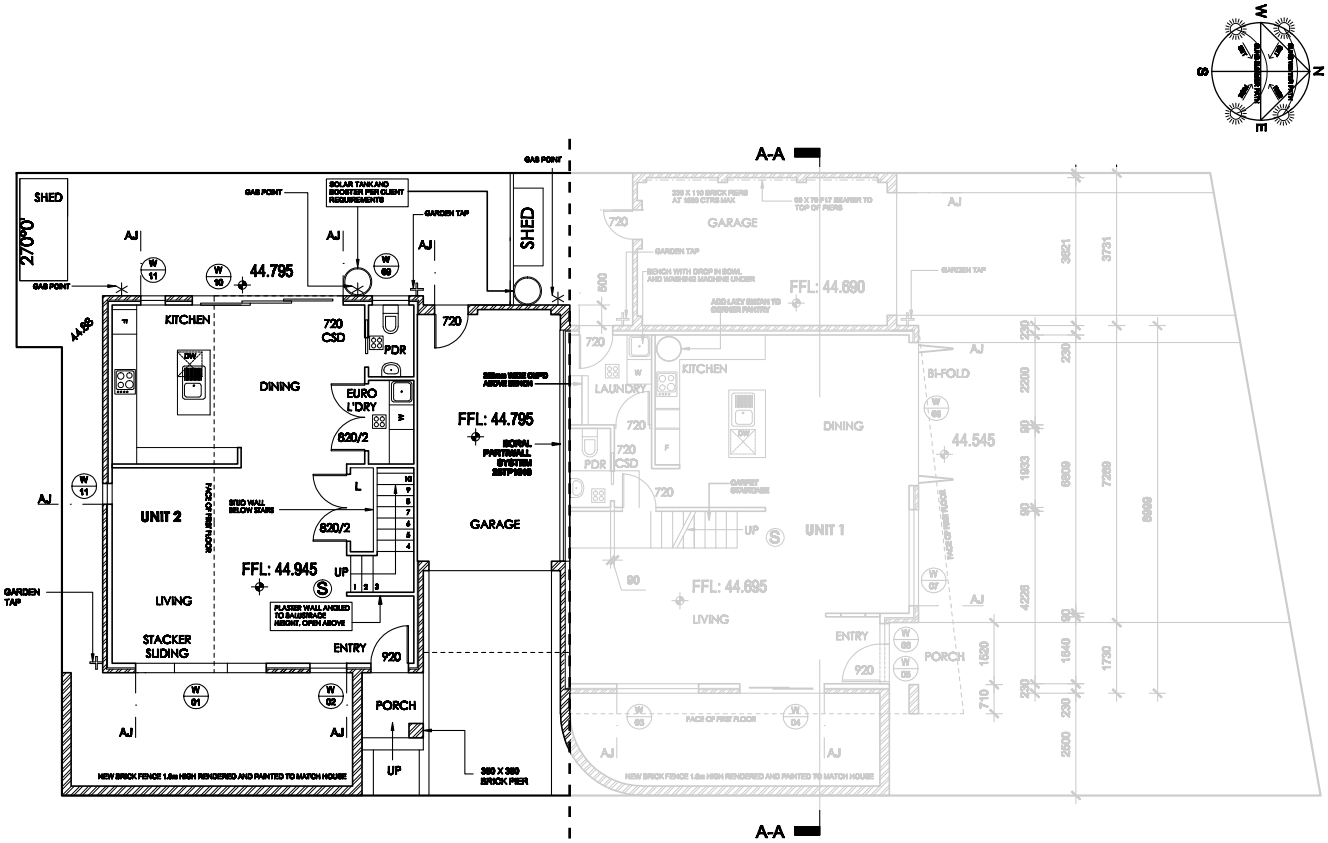
- Location: Melbourne, Australia
- Area: 126m²
- Design Studio: MASSIMO Interiors
- Designer: Massimo Speroni
- Photographer: Stu Morley

本案原为一座位于转角处的独栋住宅，后来被一分为二。业主希望把本案打造成一个优雅、现代、舒适的开放式空间，可供朋友和家人聚会，而且希望客人来到此处会眼前一亮，甚至感觉置身于五星级豪华酒店。

The original site was a single dwelling on a corner block that was subdivided into two. The client brief for the project was to create an elegant, modern yet comfortable open plan living space to entertain friends and family. The client wanted a home with a wow factor and that level of luxury you may find in a 5 star hotel.

设计师运用了现代与传统融合的风格，营造了本案有序、温馨而且舒适的环境。白色现代风格的家具和透明的树脂家具让本案更加宽敞明亮。休息室的壁画是本案设计的神来之笔，中性的色调和白色家具形成了良好的互补。

The use of modern and traditional styles was beautifully blended creating a sleek yet warm and comfortable environment. White modern sleek furniture and transparent polycarbonate furniture increase the sense of space and brightness. Nothing competes with the mural in the loungeroom, a neutral palette with white furniture pieces complement each other.



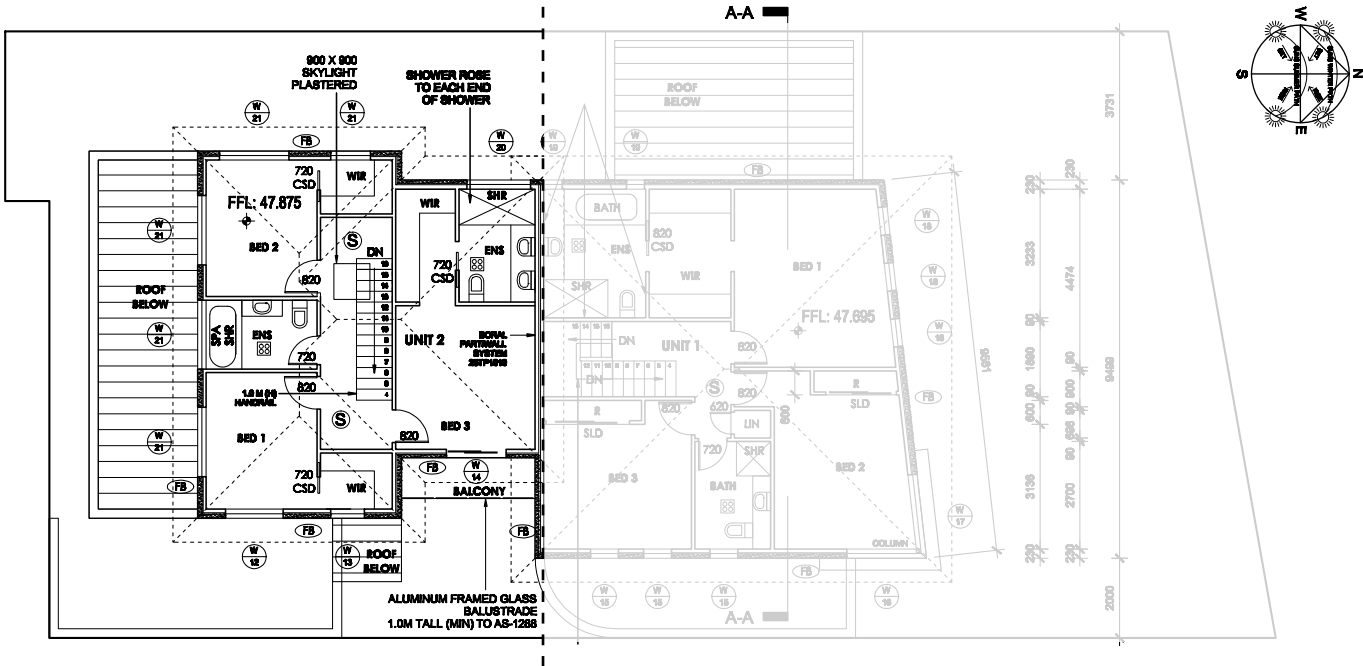
一层平面图
Ground Floor Plan



弧形的转角沙发让可入座的空间增大，现代、透明的意大利帕莎手扶椅不仅具有传统翼状靠背椅的造型，而且还可以让人们看到椅子后的场景。

The curved corner sofa offers more seating and allows for entertainment while the modern transparent Pasha arm chairs from Pedrali, Italy, not only bring in the shapes of traditional wing chairs but they allowing us to see right through them becoming almost invisible.





二层平面图
Second Floor Plan



卧室里是按照星际酒店尺寸定做的大床，床上设有浅紫灰色软垫，是房间里的视觉焦点。床板可以打开，下面作为储物空间。与现代的 Bourgie 透明床头柜和床头靠背后的镜子相比，床头的弧形是唯一的曲线，床头软包靠背上的钻石钉扣和翼状装饰使卧室呈现出一种传统豪华的感觉。

In the bedroom a bespoke King size bed upholstered in white velvet becomes the focus in this room. The bed was specifically design for the client with a lift-up base for extra storage. The curved shape of the bed-head with piping, diamond buttoning and large wings bring in a traditional and luxurious feel contrasted by the modern Bourgie transparent table lamps and the mirrored bedside tables.